



**Odisee**  
UNIVERSITY OF APPLIED SCIENCES

**Opgroeien**  **Vlaanderen**  
is kansrijk opgroeien



REGIONE DEL VENETO

  
City of Rotterdam



**Ensel-Network**



With the support of: **Committee on Environmental and Health Crisis, and the participation of ENSEL NETWORK**

**ENSA General Assembly 2023 and connected activities Brussels 22, 23 and 24 January 2024**

## **Presentation of the Ensel Network**

**Miltos Sakellariou**

Committee on Environmental and Health Crisis

ENSA-Coordinator for Wellbeing and Ensel Network

President of Social Cooperative of Cyclades

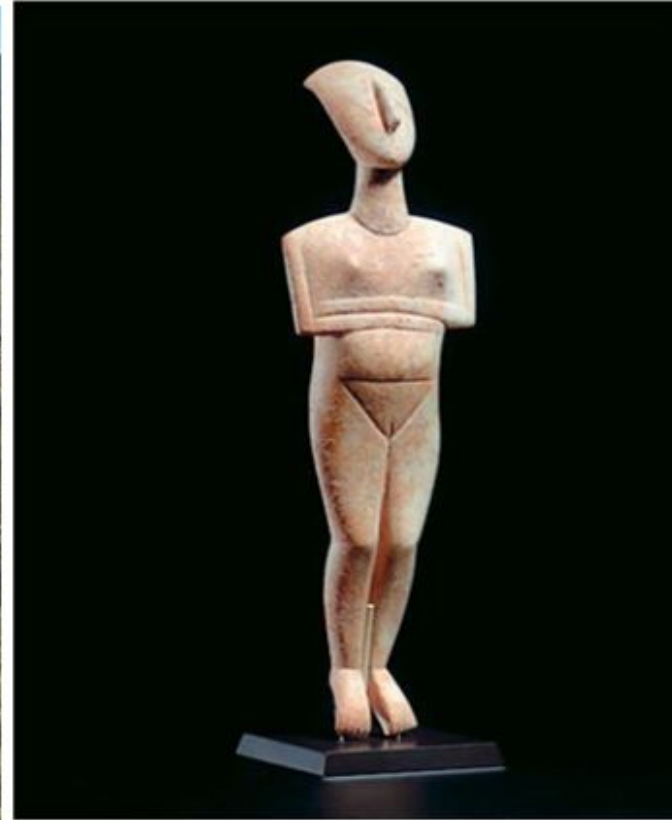
Family Therapist, Prevention Counsellor in Addictions

MSc Counseling Psychology

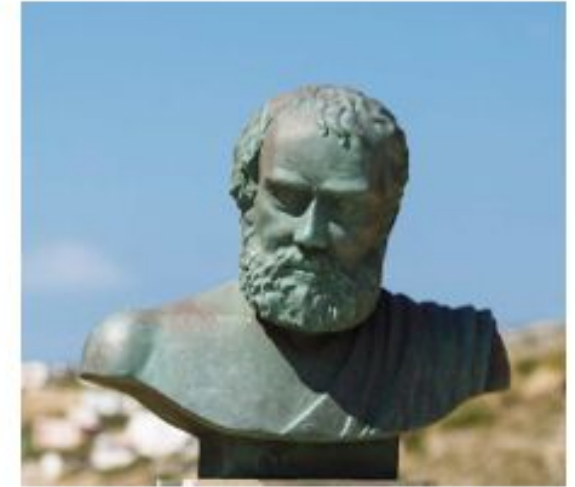
# SYROS ISLAND-CYCLADES



# KASTRI 2700 B.C.



# Pherecydes from Syros



**PHERECYDES**

*from Syros*

**THEOGONY**

# HISTORY OF ENSEL NETWORK

- In 2019 within the framework of the project [“REFLECT”](#) for Social Emotional Learning in Schools, an ERASMUS + program, several organizations and authorities with the participation of the University of Granada-Spain and Evora Portugal, from all over Europe started to discuss the creation of a EUROPEAN NETWORK FOR SOCIAL EMOTIONAL LEARNING.
- The partners of the [COMPUSEL](#) project, "Computational Thinking in Enhancing Primary Students' Social-Emotional Learning Skills", with the participation of **5 Universities (Coordination –Çanakkale University–Turkey)**, and the Social Cooperative of Cyclades, have been also informed about this process and they are interested in participating in ENSEL activities.
- Especially after the presentation of the REFLECT project, at a **conference of ENSA in 2021**, a proposal was from ALTERA VITA, to start a dialogue for the establishment of the EUROPEAN NETWORK of SOCIAL EMOTIONAL LEARNING-ENSEL NETWORK and to present it at the next ENSA Assembly in Venice, November 2022.

**IEP**

MINISTRY OF EDUCATION AND RELIGIOUS AFFAIRS OF GREECE  
INSTITUTE OF EDUCATIONAL POLICY

**ERASMUS + REFLECT PROJECT  
SOCIAL EMOTIONAL LEARNING IN SCHOOLS**



2019-1-BE02-KA201-060353





# COMPUSEL PROJECT

Computational Thinking in Enhancing Primary Students' Social-Emotional Learning Skills

2021-1-TR01-KA220-SCH-000031609

## 1- Curriculum



Çanakkale Onsekiz Mart  
University



Izmir Democracy University



University of Bucharest



UNIVERSITY OF  
BUCHAREST  
— VIRTUTE ET SAPIENTIA —

## 2- Digital Stories



University of Evora



University of Lodz



## 3- Teacher's Handbook



Social Cooperative of  
Cyclades





With the support of:



CONFERENCE OF MAYORS OF THE COUNCIL OF EUROPE  
CONFERENCE OF MAYORS OF COUNCIL OF EUROPE



## ENSA General Assembly

Venice, 15 November 2022

Panel 2: Promotion of Social Emotional Learning and growth of children and pupils, launch of a network

### **ENSEL NETWORK for Social Emotional Learning**

vision, aims, activities, first steps

Bo Stal -Floeanne Burema-Denise Jansen-Thijs Zwarts

Minors Beyond Borders project

**Rotterdam University**





# Minor+ Beyond Borders - Hogeschool Rotterdam

Internship 2022-2023 in Syros  
Team ENSEL-NETWORK



# Methodology

# Design Thinking



# Design Thinking Process

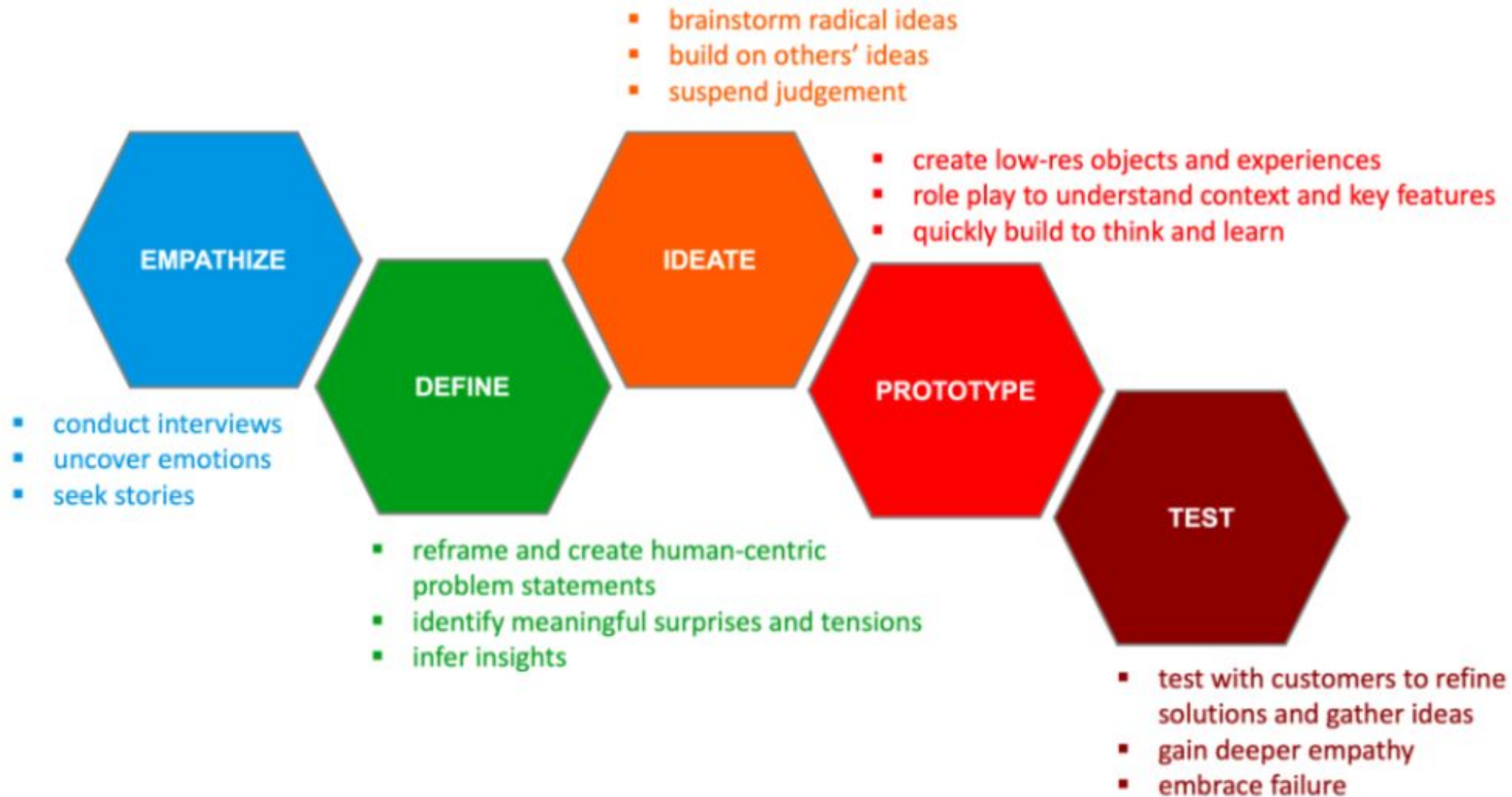


Figure 1: The classic design thinking process graphic, adapted from Stanford's d.school



Log in

[Home](#)

[History](#)

[Vision & mission](#)

[Organisations](#)

[Projects](#)

# European Network for Social Emotional Learning

[KNOW MORE >](#)



European Network for Social Emotional Learning  
Universities-Municipalities-NGOs-Schools-Youth Organisations

## INFO

[Moodle community](#)  
[Moodle free support](#)  
[Moodle Docs](#)  
[Moodle.com](#)

## CONTACT US

Kepos-Manna, Syros 84100 -Greece  
☎ Phone : +306972204356  
✉ E-mail : [ensel.network@gmail.com](mailto:ensel.network@gmail.com)

## GET SOCIAL





A B C D E F G H I K L M N O P Q R S T U V W X Y Z

# A

- Altera Vita Social Cooperative of Cyclades
- Ajuntament De Castello
- Ajuntament De Terrassa

# B

- Bubama

# C

- Centre Commundt d'action social de Marseille
- Conseil Departmental du val de Marne
- Comumidad de Madrid

# H

- [Rotterdam University of Applied Science](#)





## Rotterdam University of Applied Science

### Information

Rotterdam University of applied sciences counts for approximately 40,000 students and 4,000 employees.

The courses have a wide range in almost every education sector.

One of the available minors is the Beyond Borders minor, students from other disciplines and (international) clients work together on issues aimed at reducing health inequalities at home and abroad. The international context distinguishes this minor from other minors.

[More: Minor Beyond Borders](#)

Connect



[Denise Jansen](#)



Floeanne Burema



Thijs Zwarts



Bo Stal





## Denise Jansen

### Information

- 21 years old
- Third year midwife student
- Minor Beyond Borders

Connect

### Projects

- EN-SEL Network



Denise Jansen  
University of Rotterdam



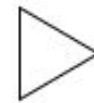
Floeanne Burema  
University of Rotterdam



Thijs Zwarts  
University of Rotterdam



Bo Stal  
University of Rotterdam



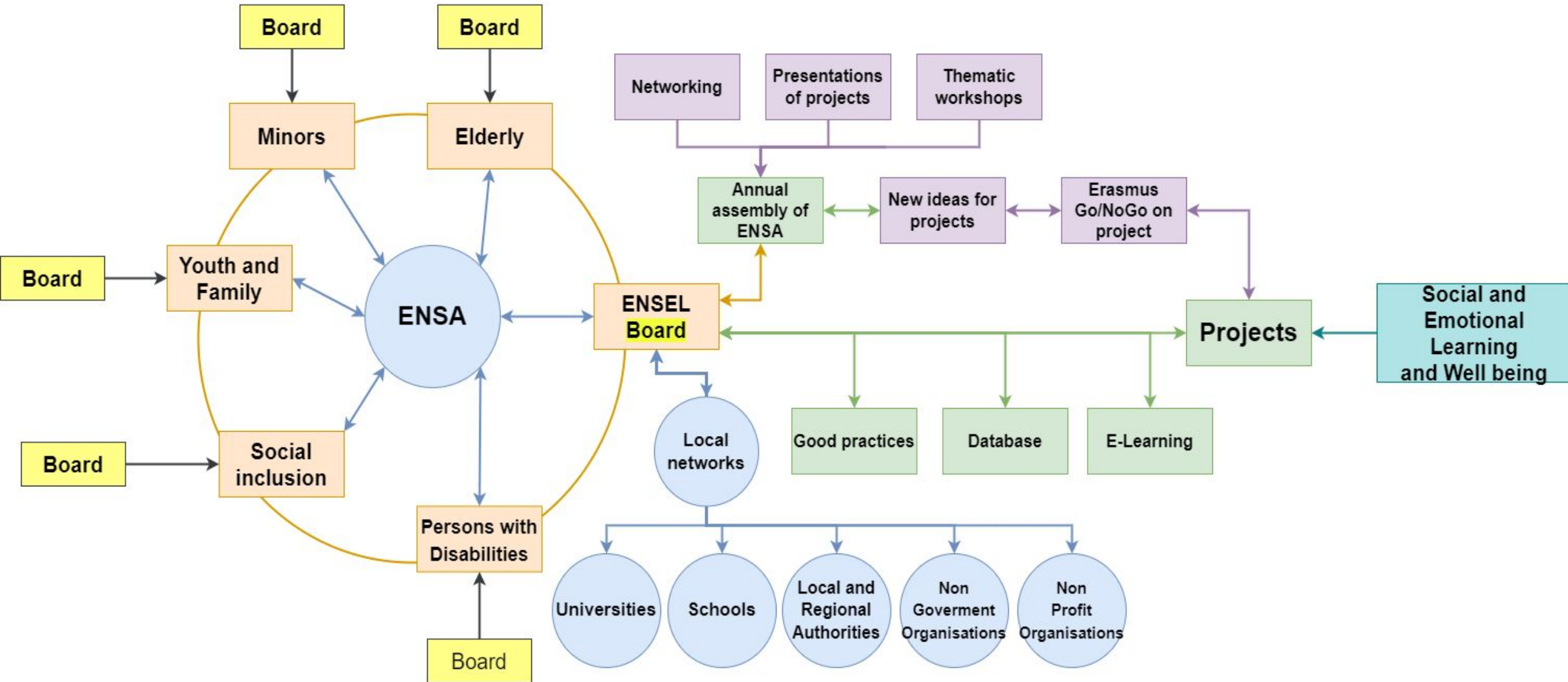
Three persons more



# ENSA working groups

Social Emotional Learning and Wellbeing Working Group

## ENSEL NETWORK







European Network  
of Social Authorities



# European Network for Social Emotional Learning and Well-Being

KNOW MORE >

- **ENSEL E- Learning Platform** ENSEL E- Learning Platform: ENSEL E- Learning Platform: **<https://en-sel.eu/>**



European Network  
of Social Authorities

## SYAH Cabo Verde (Cape Verde)

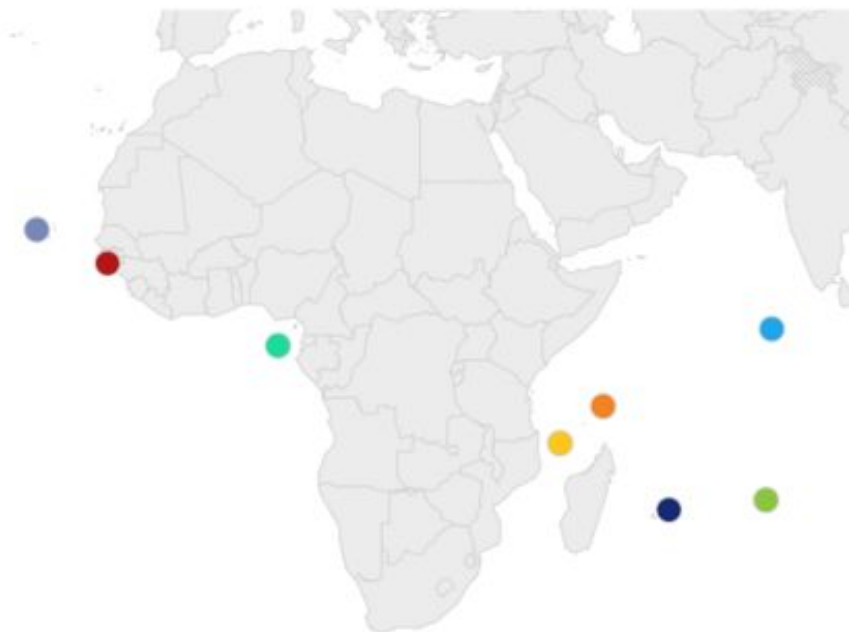
Dashboard / Courses / SYAH Cabo Verde (Cape Verde)



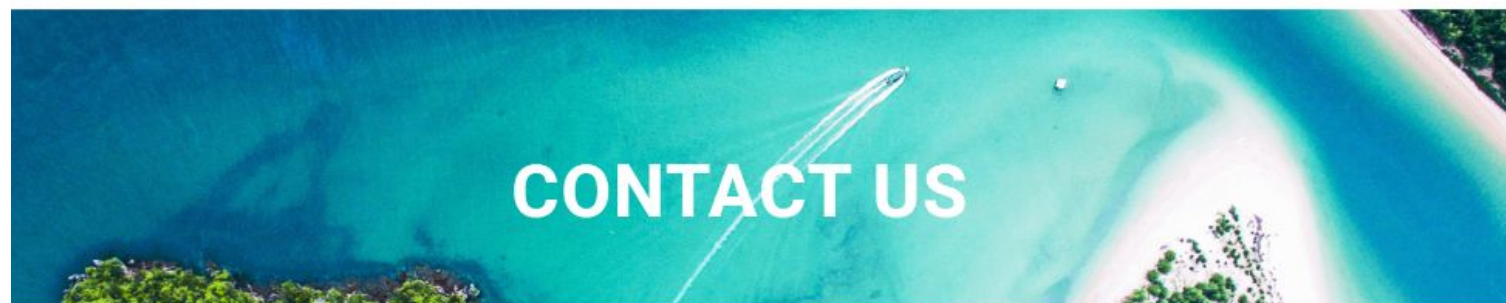
Ensel-Network

OUR STORY

# Where We Work



# Focus Areas



VISIT US

SYAH Head Office



CALL US

+230 402 6100



CONTACT US

contact@syah.org

# SOCIAL EMOTIONAL LEARNING AND WELL BEING



Self-awareness

Self-management

Social awareness

Relationship skills

Responsible decision-making

# ENSEL MEMBERSHIP

- ENSEL network as an “umbrella organization”, **providing members with a platform** and framework to **join** :
- forces, exchange **good practices and educational materials** for professionals,
- develop common actions to motivate all parties involved **in Life Skills**
- including both intrapersonal and interpersonal qualities and skills.
- **Intrapersonal life skills** include **self-awareness, self-control, self-esteem, self-respect and self-reflection.**
- **Interpersonal life skills** include **effective communication, cooperation, teamwork and problem-solving abilities, respect for similarities and differences, appreciation, empathy, trust and love.**
- **ENSEL** (European Network for Social Emotional learning) aims to implement life skills in a **holistic way**, helping young people exercise their fundamental rights in the **home, school, class and communities.**

# OBJECTIVES AND ACTIVITIES

The main objectives of the **EUROPEAN NETWORK FOR SOCIAL EMOTIONAL LEARNING (ENSEL)** are:

1. To **coordinate actions and initiatives** at the European level and **develop partnerships across Europe**.
2. To **campaign and advocate for a common European strategy for life skills**, especially for Social and emotional competencies in Europe and to **monitor and influence policies at the national and European levels for Schools, Universities, Communities, and Organisations**.
3. To **produce and promote the exchange of good practices**, enforce capacity building and provide tools and training to professionals working in the field.
4. To raise awareness among the general public and empower children and young people as well as parents, teachers and stakeholders professionals on



## Available courses



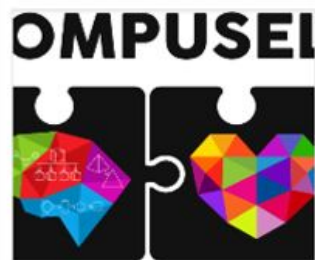
Internship for Social Emotional Learning

[ReadMore >](#)



The Living Art - The Art of living -EN

[ReadMore >](#)



Teachers' E- Course

[ReadMore >](#)



ERASMUS +ALIVE

[ReadMore >](#)



ERASMUS + R.E.D.- EN

[ReadMore >](#)



REFLECT-Teachers' E Course- English

[ReadMore >](#)



DIGIT-ALL  
2020-1-SK01-KA227-015025  
Digital skills for adults - Course 2 - English FF

[ReadMore >](#)



LOTI E-Course EN

[ReadMore >](#)



DANCEFULNESS  
2020-1-SK01-KA227-ADU-094272  
ERASMUS+ DANCEFULNESS

[ReadMore >](#)



SYAH Cabo Verde (Cape Verde)

[ReadMore >](#)

## Available courses



Internship for Social  
Emotional Learning

[ReadMore >>](#)



The Living Art - The  
Art of living -EN

[ReadMore >>](#)

OMPUSEI



Teachers' E- Course

[ReadMore >>](#)



ERASMUS +ALIVE

[ReadMore >>](#)



ERASMUS + R.E.D.-  
EN

[ReadMore >>](#)



REFLECT-Teachers' E  
Course- English

[ReadMore >>](#)



DIGIT-ALL

Digital skills for  
adults - Course 2 -  
English FF

[ReadMore >>](#)



LOTI E-Course EN

[ReadMore >>](#)



ERASMUS+  
DANCEFULNESS

[ReadMore >>](#)



SYAH Cabo Verde  
(Cape Verde)

[ReadMore >>](#)

# ENSA WORKING GROUP FOR WELLBEING-ENSEL NETWORK

- ALTERA VITA -SOCIAL COOPERATIVE OF CYCLADES-GREECE
- UNIVERSITY OF ROTTERDAM -HOLLAND
- UNIVERSITY OF EVORA- PORTUGAL
- UNIVERSITY OF GRANADA -SPAIN
- UNIVERSITY OF VALENCIA -SPAIN
- UNIVERSITY OF CANAKKALE-TURKEY
- UNIVERSITY OF BUCHAREST- ROMANIA
- UNIVERSITY OF LODZ-POLLAND
- UNIVERSITY OF LEON-SPAIN
- UNIVERSITY OF TEACHER EDUCATION IN SPECIAL NEEDS-Switzerland
- UNIVERSITY OF EXETER - UNITED KINGDOM
- CATHOLIC EDUCATION FLANDERS-BELGIUM



# ENSA WORKING GROUP FOR SEL AND WELLBEING

- IMAGINE IF -UNITED KINGDOM
- SKOLUTVECKLARN A SVERIGE AB SWEDEN
- INTERKANTONALE HOCHSCHULE FÜR HEILPÄDAGOGIK, SWISS
- DOUBLE HELIX - UNITED KINGDOM
- CIPFP- MISERICORDIA CENTRO INTEGRADO PÚBLICO DE FORMACIÓN PROFESIONAL - SPAIN
- FEMXA FORMACION SLU- SPAIN
- SOCIETY FOR THE PROTECTION OF MINORS OF SYROS-SOUTH AEGEAN GREECE
- AROGI ASSOCIATION OF VISUALLY IMPAIRED PEOPLE OF CYCLADES- GREECE
- 4TH EXPERIMENTAL ELEMENTARY SCHOOL OF SYROS-GREECE
- TARSUS CHAMBER OF COMMERCE AND INDUSTRY - TURKEY
- HIGH SCHOOL OF DORTMOUTH-GERMANY

# ENSA WORKING GROUP FOR SEL AND WELLBEING

- M&M PROFUTURE TRAINING, S.L-SPAIN
- BILGI VE BECERI DERNEGIBILGI VE BECERI DERNEGI -TURKEY
- YOUTH POWER- SWEDEN
- ARMENIAN PROGRESSIVE YOUTH NGO- ARMENIA
- PRIVATE CAMLICA UGUR HIGH SCHOOLPRIVATE CAMLICA UGUR HIGH SCHOOL- TURKEY
- YOUNITED Z.S. - YOUNITED Z.S. - CZECH REPUBLIC
- PHORMS MITTE- GERMANY
- ACTIVE ZONE OUTDOOR-CYPRUS
- BUBINGA AGENCY- AEGYPT
- ASSOCIATION OF EUROPEAN PROJECTS IN BULGARIA
- CREATIVE YOUTH ACADEMY HUNGARY
- ASOCIACION PARA EL DESAROLLO JUVENIL Y CULTURAL ALMENARAS- SPAIN
- SYAH CABO VERDE

## Coordination of ENSA working group- Wellbeing and Social Emotional Learning

- The present coordination of the thematic ENSA working group- **Wellbeing and Social Emotional Learning** - is led by the Social Cooperative of Cyclades, Greece, represented by **Miltos Sakellariou**, Family Therapist, Prevention Counselor in Addiction, Chairman of the Board of ALTERA VITA.
- Altera Vita is a scientific research Centre that implements education and awareness programmes, in the areas of Social Economy, Health Promotion, Organic Farming, Environment and Sustainable Development, the Arts and Culture, Pedagogy, Psychology, and New Technologies.
- **Participation**
- If you are interested to participate in this working group of ENSA, please fill out the following form: <https://forms.gle/uCCqBiBo9oUpvtcX6>

## Day 3: Wednesday, January 24

- Hybrid event Venue: [Odisee University of Applied Sciences – Campus Brussels - Warmoesberg 26, 1000 Brussel](#)

10.00 - 13.00

### **ENSEL Network- Social Emotional Learning and Well Being**

Coordination: **Miltos Sakellariou**, Social Cooperative Altera Vita, Cyclades (Greece),  
Coordinator ENSEL Network & ENSA WG for Wellbeing and SEL

Speakers:

**Prof. Dr. Cigdem Sahin Taskin**, Canakkale Onsekiz Mart University, Faculty of Education (Turkey), Navigating Emotions Through Computational Thinking: Unpacking the COMPUSEL Project

**Dr. Miguel Vidal González**, Spanish National Reference Centre CIPFP Misericordia, Valencia, Spain, Dancefulness and Wellbeing

**Maria del Carmen Lopez Cruz**, FEMXA, Spain Director of European Funds & Development Approach to social training: European tools and funds for a well-being improvement

**Antonio Palazuelos Prieto**, SYAH Cabo Verde, Live on an island project, youth work for climate change and wellbeing in island and coastal countries

**Antonella Masullo**, Municipality Cava de Tirreni (Province of Salerno)

Presentation project "Promotion Health and Well Being City of Cava de' Tirreni" 4th edition – February - March 2024

Workshop with interactive sessions

**ENSA BRUSSELS' OFFICE**

**Legal representative**

**Annalisa Bisson**

contact, Elena Curtopassi

Veneto Region, Brussels' Office

[elena.curtopassi@regione.veneto.it](mailto:elena.curtopassi@regione.veneto.it)

<https://www.ensa-network.eu/>



European Network  
of Social Authorities

**ENSEL NETWORK and WELL BEING WORKING GROUP**

**Coordinator -ALTERA VITA**

Miltos Sakellariou, Chairman of the Board

Family Therapist, Prevention Counsellor in Addictions, MSc Counseling Psychology

[ensel.network@gmail.com](mailto:ensel.network@gmail.com)

<https://en-sel.eu/>



**Ensel-Network**