

FEBRUARY 25, 2022

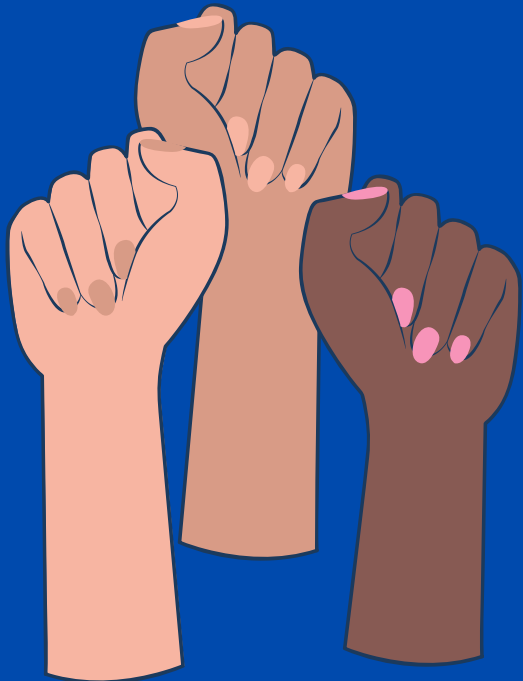


**TOGETHER AGAINST  
SOCIAL EXCLUSION  
TOGETHER AGAINST  
SOCIAL EXCLUSION**



BEYOND BORDERS - CHALLENGING GLOBAL HEALTH EQUITY

introduction  
Introduction  
introduction  
introduction



Sam van Maurik (20)  
Student midwifery



Femke Huijssee (21)  
Student Leisure & Event management



Frances Jüttner (28)  
Student Communications



Lotte van der Strate (20)  
Student midwifery

## Ignacio Socías



### About IFFD

The **International Federation for Family Development (IFFD)** is a non-governmental, independent, and non-profit federation, whose primary mission is to support families through training.

Family Enrichment activity began in the mid-sixties with the development of support programs for parents based on the 'case method'. After more than 30 years' experience of carrying out these courses, the International Federation for Family Development was founded in Orlando (Florida). The headquarters is in Spain, where the first courses started.

**IFFD programs** work in **68** countries on the **5** continents in collaboration with an extensive network of volunteers. IFFD is the largest international civil society organization devoted to family development.

IFFD has General Consultative Status with the UN Economic and Social Council (ECOSOC), and regularly organizes international congresses on the family.



Inspiring families



### Family Enrichment

The primary mission of Family Enrichment is to provide parents with the tools they need to reach their full potential as educators of their children, and to develop their very own personal and family plan.



### Family Advocacy

IFFD works hard to make sure that the family perspective is taken into consideration by international organisms when making decisions and recommendations.

# Elena Curtopassi

## Social policy officer Veneto Region



The European Local Inclusion & Social Action Network (ELISAN) aims to provide creative and innovative responses to social needs in Europe.



# Venice declaration SDG 11



TO MAKE CITIES AND HUMAN  
SETTLEMENTS INCLUSIVE, SAFE,  
RESILIENT AND SUSTAINABLE



## VENICE DECLARATION

We, representatives of cities, regions and local authorities of all sizes and from around the world,

DECLARE AS FOLLOWS

WHEREAS at the United Nations Sustainable Development Summit on 25 September 2015, more than 150 world leaders adopted the new 2030 Agenda for Sustainable Development, including the Sustainable Development Goals and a dedicated goal for urban development, SDG11, which calls to "make cities and human settlements inclusive, safe, resilient and sustainable";

WHEREAS a year later, at the UN Conference on Housing and Sustainable Urban Development, Habitat III, Member states signed the New Urban Agenda, an action-oriented document which sets global standards of achieving SDG11, rethinking the way we build, manage, and live in cities.

WHEREAS the New Urban Agenda acknowledges that while most of the global population and capital goods are concentrated in cities, urban areas remain crucial to social development, economic prosperity and poverty eradication.

WHEREAS cities and territories drive most of the economic growth and are a source of innovation, facing sanitation and security challenges while acting as cultural centres.

WHEREAS families are crucial development agents provided they can find adequate environment is needed to facilitate their role and make possible an accurate assessment of the needs for inclusive cities, especially in terms of investment in infrastructure.

WHEREAS building cities that are inclusive, safe, resilient, and sustainable require intensive policy coordination and investment choices for families to reach to reach their potential as productive, engaged, and capable agents of sustainable development, contributing fully to their members and communities.

IN SIGNING THIS DECLARATION, we proclaim the commitment of the regions, cities and territories we represent to follow this universal call through the following common endeavours, as proposed by the International Federation for Family Development:

### 1. HOUSING

Cities design should include all family situations and social groups, flexible urban and environmentally sustainable planning, and social services to meet every need.

### 2. NEW TECHNOLOGIES

The need of connecting people through new technologies should be also included to ensure social inclusion, to bridge the digital gap via training of older persons, professional carers and families in vulnerable situations.

### 3. EDUCATION

Inclusive and quality education for all and promotion of lifelong learning should lead to the improvement of accessible and affordable childcare facilities in locations close to the residence or workplace of parents, parenting education, participation of older persons in educational activities for the youth, intergenerational meeting places

for cultural and leisure activities, youth integration practices as well as second chance schools and chances to reintegrate in society.

### 4. HEALTHCARE

Organization of campaigns to promote healthy habits and lifestyles, especially those targeted to prevent mental disorders and to meet the needs of older persons, setting the necessary structure to stimulate innovation and intergenerational relations in hospitals as well as medical attention of visitors and tourists.

### 5. SAFETY

Creation of a welcoming environment in the streets based on solidarity, mutual support and social interaction, through instruments like promoting volunteers, a community police, the use of technology, information and training on crisis situations.

### 6. CLEAN AIR

Creation of as many green areas as possible, tax benefits for garden buildings, progressive reduction of pollution produced by public transportation, increase of charging points for electric cars and support for circular economy.

### 7. TRANSPORTATION

Plan and design rational and accessible public transportation system, while promoting teleworking and recognizing and valuing time at home, unpaid care and domestic work.

### 8. AFFORDABILITY

Plan to facilitate access to housing for families in vulnerable situations, including youth, persons with disabilities and older persons; develop smart intergenerational living arrangements with shared services, efficient energy-saving, flexible buildings and care provisions.

### 9. LEISURE AND TOURISM

Foster of active engagement in the volunteering sector to conserve and restore the cultural and touristic of the city, as well as tools to facilitate access to cultural activities for all through special prices and adhoc exhibitions and locations for museums, theatres, etc.

### 10. VULNERABLE FAMILIES

Establish specific programs to recognize the value of unpaid work and care, and address the needs of families in vulnerable situations, including single-parent families, large families, migrant families, etc.

TO ENSURE THE INTENT OF THIS PLEDGE IS REALIZED, we commit to submit a Monitoring Report every year before the 31st March to be presented to the United Nations Department of Economic and Social Affairs by the International Federation for Family Development secretariat, with information of the previous year on the progress made in the 10 points mentioned above.

After signature, sent to [un@iffd.org](mailto:un@iffd.org) the following information and documents:

- Logo and Background image
- Signatory name and position
- Phone no., email and website address
- Address of the city or territory and country
- A copy of the Declaration duly signed with date

# focus

## POINT 10. VULNERABLE FAMILIES

ESTABLISH SPECIFIC PROGRAMS TO RECOGNIZE THE VALUE OF UNPAID WORK AND CARE AND ADDRESS THE NEEDS OF FAMILIES IN VULNERABLE SITUATIONS, INCLUDING SINGLE-PARENT FAMILIES, LARGES FAMILIES, MIGRANT FAMILIES, ETC.

SINGLE IMMIGRANT MOTHERS IN THE AGE OF 21-35 ARE FACING SOCIAL EXCLUSION POST-COVID.

WHAT ARE THE BEST WAYS TO ADDRESS SOCIAL EXCLUSION AND TO STIMULATE CO-CREATION FOR SINGLE MIGRANT MOTHERS WITH HOUSING IN THE AGE OF 21-35 IN URBAN SETTLEMENTS POST-COVID?



# IMPORTANT FINDINGS

Social exclusion



Female migrants are increasingly part of flows of migrant workers, moving on their own to become the principal wage earners for their families



Lack of confidence



Lack of language skills



## **MIGRANT WOMEN ARE IMPORTANT AGENTS OF CHANGE.**

THEY TRANSFORM SOCIAL, CULTURAL AND POLITICAL NORMS AND PROMOTE POSITIVE SOCIAL CHANGE ACROSS HOUSEHOLDS AND COMMUNITIES  
(UN WOMEN, 2017)



WHAT CAN COUNTRIES, REGIONS AND MUNICIPALITIES DO TO INCLUDE MIGRANT WOMEN INTO SOCIETY AND TO HELP MIGRANT WOMEN TO MOVE FORWARD?



# POSSIBLE SOLUTIONS



Improve language skills



Empowerment



Appriciation and validation by society



# POSSIBLE SOLUTIONS



More opportunities



More contribution



expansion of mind –  
cultural and creative



engage in dialogue  
engage in dialogue  
engage in dialogue  
engage in dialogue

**LET'S START THE CONVERSATION**

