



Presentation of Val-de-Marne

1) The Department

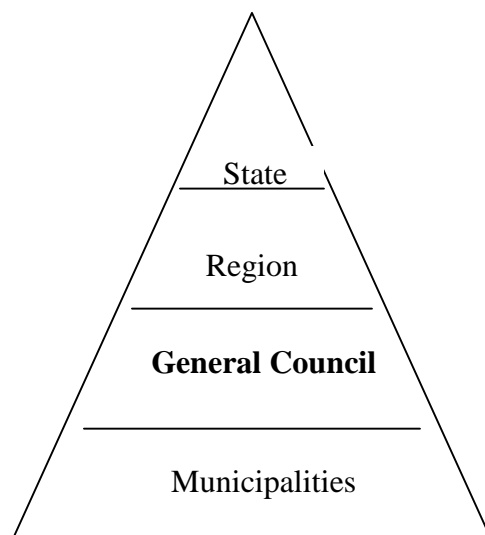
Val-de-Marne is a department in the Central Northern part of France. Sharing its boundaries with Paris, it is defined as the close South East suburbs of the French capital. It spreads on 245 sq.kms, and is one of the most densely populated areas in France. (50009 inh./km²).

Many rail and road transportation networks (underground, Regional Express Rail Network :‘RER’) crisscross the department, situated in the heart of the Paris Basin. In the South of the department lies Orly Airport, second national airport. Manufactures have settled along the Marne and Seine rivers, and there is also an important tertiary activity, including several University campuses (Paris XII university and Cachan School).

2) Prerogatives of the General Council

In France, there are four territorial institutional levels :

The State, the regions, the departments and the municipalities.



General Councils are the legal bodies of the departments. There are 95 General Councils in France.

In Val-de-Marne, the General Council was created in 1967.

It is divided into 49 sectors, or 'cantons'. Each 'canton' elects a General Councillor for a 6-year mandate.



The major jurisdiction attributed to the Department is social action. More than half of the General Council budget is dedicated to social actions.

The main department jurisdictions are :

- Health Prevention Actions
- Childhood and family
- Institutionalisation /accomodation of the elderly and the disabled.

However, the social sector is not the only duty of the Department. Actually, the General Council employs 6000 agents working in the fields of education, road maintenance, economic development.