

Partners



Den achtkanter vzw, Kortrijk (B)
www.achtkanter.be
johan.warne@achtkanter.be



Studieförbundet Vuxenskolan Väst (SE)
www.sv.se
mia.ekegren@sv.se



Universidade de Evora (PT)
www.uevora.pt
aac@uevora.pt



Asociacion Vale, Durcal (SP)
www.asvale.es
comunicacion@asvale.es

Institut Valencià d'Atenció Social – Sanitària IVASS, Valencia (SP)
www.ivass.gva.es
sorzano_marcas@gva.es

Tampere University of Applied Sciences, Tampere (FI)
www.tamk.fi
teemu.jokinen@tamk.fi

NARHU, Plovdiv (BG)
www.narhu.org
info@narhu.org

Irecoop Veneto, Padova (IT)
www.irecoop.veneto.it
f.barison@irecoop.veneto.it

ENSA European Network of Social Authorities
www.ensa-network.eu
elena.curtopassi@regione.veneto.it



COGNITION & INCLUSION



Biannual C & I - Newsletter: subscribe -
elena.curtopassi@regione.veneto.it



Co-funded by the
Erasmus+ Programme
of the European Union

2017-1-BE02-KA202-034722

project overview

"**Cognition & Inclusion**" addresses the adaptive and transversal skills necessary to become a successful participant in our society. Adults with a learning disability are often missing these skills as they are not part of the curriculum or training. In general, for this target group, training is focusing on practical skills and not on (e.g.) problem solving skills. Programs for training transversal skills are not known or not implemented successfully, the latter because trainers or social workers involved often are not really convinced that adults with learning disabilities are able to learn these skills.

"**C&I**" wants to reflect on successfully implemented cognitive models, disseminate these approaches, and contribute to optimal conditions for successful training on the level of the professionals and of the organization that supports the adult.

The project objective - at the end - is to promote the quality of live, inclusion and job opportunities of the target group.

Intellectual outputs

A review of cognitive approaches and methodologies to improve 6 key transversal competences in our target group: problem solving, self-regulation, self-direction, flexibility and creative thinking.

A tool to evaluate the mindset of the professionals on intelligence and cognition, inclusion, quality of life and employment of the target group.

A tool to evaluate the mindset of organizations as present in their policy and strategies to support the cognitive orientation of their professionals.

A tool to evaluate the learner's mindset and to what degree the cognitive methodologies results in a 'growth' mindset.

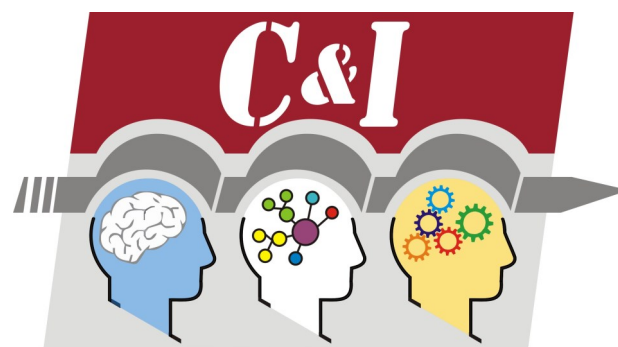
events

International meetings

- ∴ November 2017 **IVASS** - VALENCIA (Spain)
Kick Off meeting
- ∴ March 2018 **NARHU** - PLOVDIV (Bulgaria)
- ∴ June 2018 **SV** - Studieförbundet Vuxenskolan VAST (Sweden)
- ∴ October 2018 **TAMK** - TAMPERE (Finland)
- ∴ April 2019 **UNIVERSITY EVORA** (Portugal)
- ∴ September 2019 **IRECOOP** - PADOVA (It)
- ∴ March 2020 **ASVALE** - DURCAL (Spain)
- ∴ August 2020 **DEN ACHTKANTER** - KORT-RIJK (Belgium)

Multiplier events

Several conferences to present the intellectual outputs in Belgium, Sweden, Finland, Spain, Portugal, Italy and Bulgaria during April-June 2020



local expertgroup

Flemish local expert group

The Flemish local expert represents members of

- ◇ University of Antwerp (prof. Jo Lebeer)
- ◇ University College AP Artesius Plantijn Antwerpen (Beno Schraepen)
- ◇ University College VIVES Kortrijk (Isabel Vandemaele)
- ◇ Professionals from organizations in the field of adult support
- ◇ Flemish - Sofie Vandemarliere
- ◇ vzw den achtkanter (Johan Warnez, Joyce Vansteenkiste, Joke Vandaele, Inge Vandeputte, Victoria Verhelst)
- ◇ Hoge kouter? Ubuntu??

vzw den achtkanter, Kortrijk (B) coordinating organization

Den achtkanter supports adults challenged by a learning disability and adults suffering from a brain injury. Quality of life is the main goal for all clients: *independence* – being able to determine and do things by yourselves, *wellbeing* – feeling good, and *social participation* – actively being part of society are pursued in consultation with the social network and community services.

